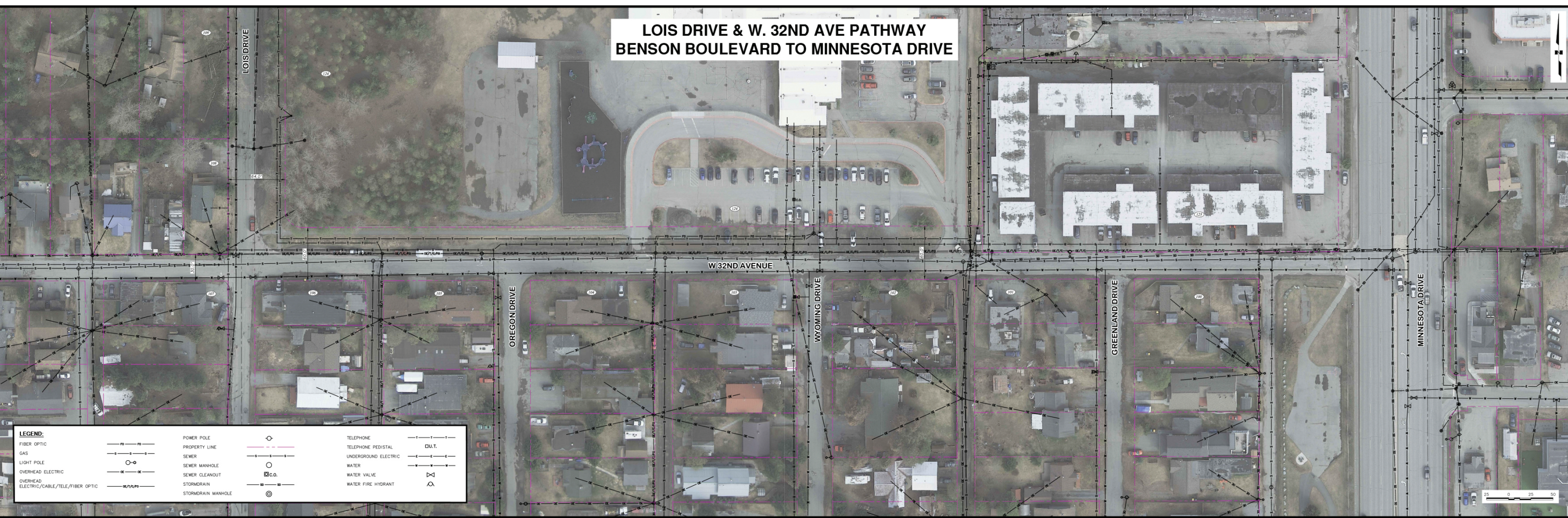


# LOIS DRIVE & W. 32ND AVE PATHWAY BENSON BOULEVARD TO MINNESOTA DRIVE



LEGEND:			
FIBER OPTIC		POWER POLE	
GAS		PROPERTY LINE	
LIGHT POLE		SEWER	
OVERHEAD ELECTRIC		SEWER MANHOLE	
OVERHEAD ELECTRIC/CABLE/TELE/FIBER OPTIC		SEWER CLEANOUT	
		STORMDRAIN	
		STORMDRAIN MANHOLE	
		TELEPHONE	
		TELEPHONE PEDISTAL	
		UNDERGROUND ELECTRIC	
		WATER	
		WATER VALVE	
		WATER FIRE HYDRANT	
		D.U.T.	

