



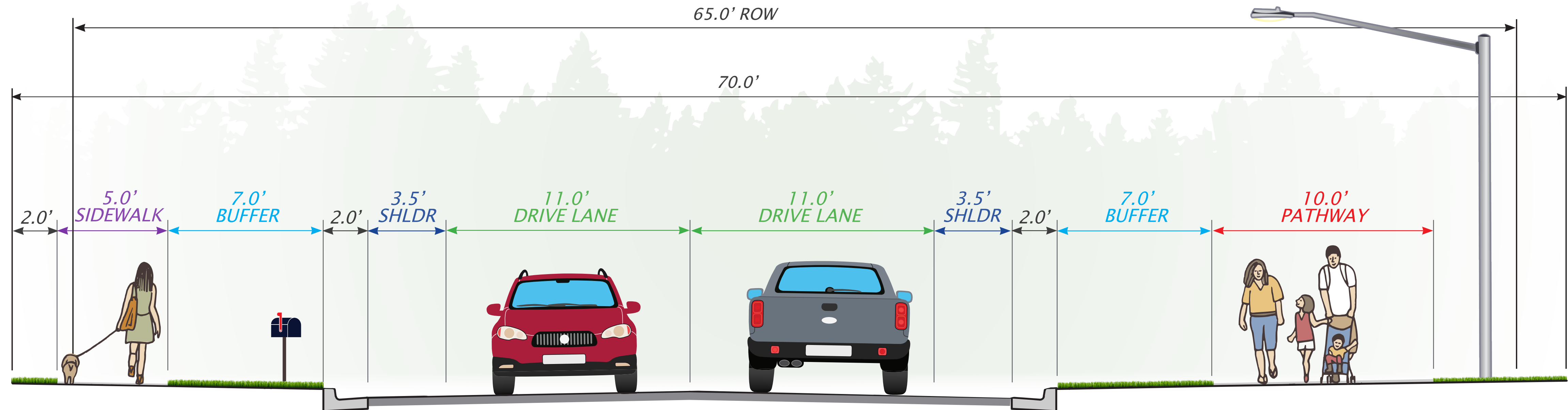
Municipality of Anchorage  
Project Management & Engineering Department

# LOIS DRIVE & 32<sup>ND</sup> AVENUE PATHWAY

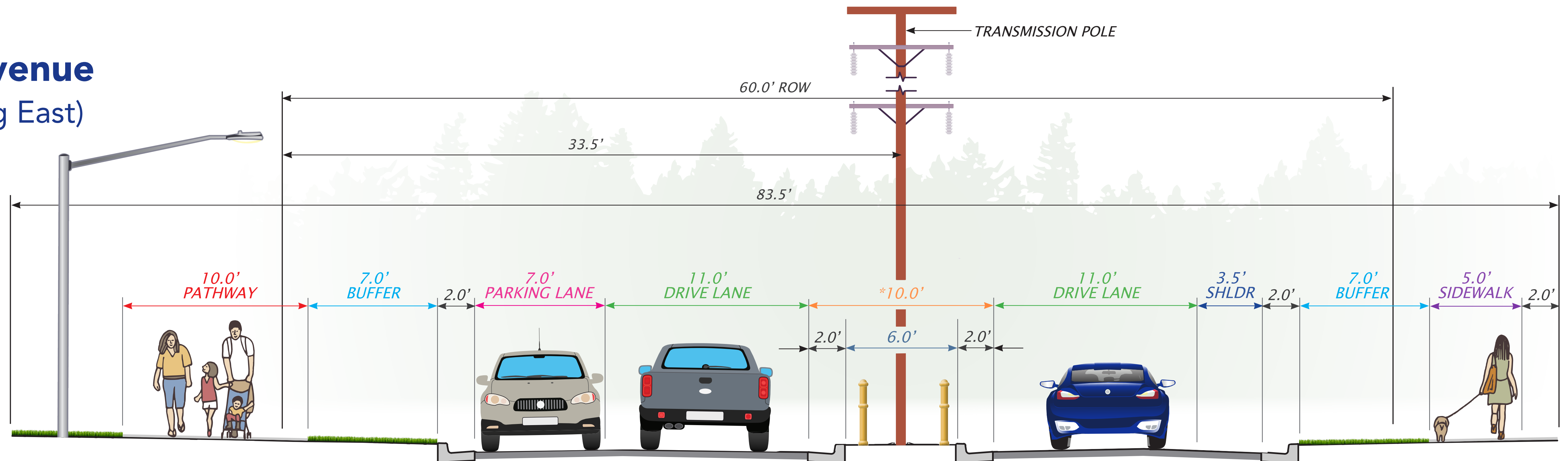
BENSON BOULEVARD TO MINNESOTA DRIVE

## ALTERNATIVE 1

**Lois Dr.**  
(Looking North)



**32<sup>nd</sup> Avenue**  
(Looking East)



\*Center median only to be constructed at transmission and distribution poles



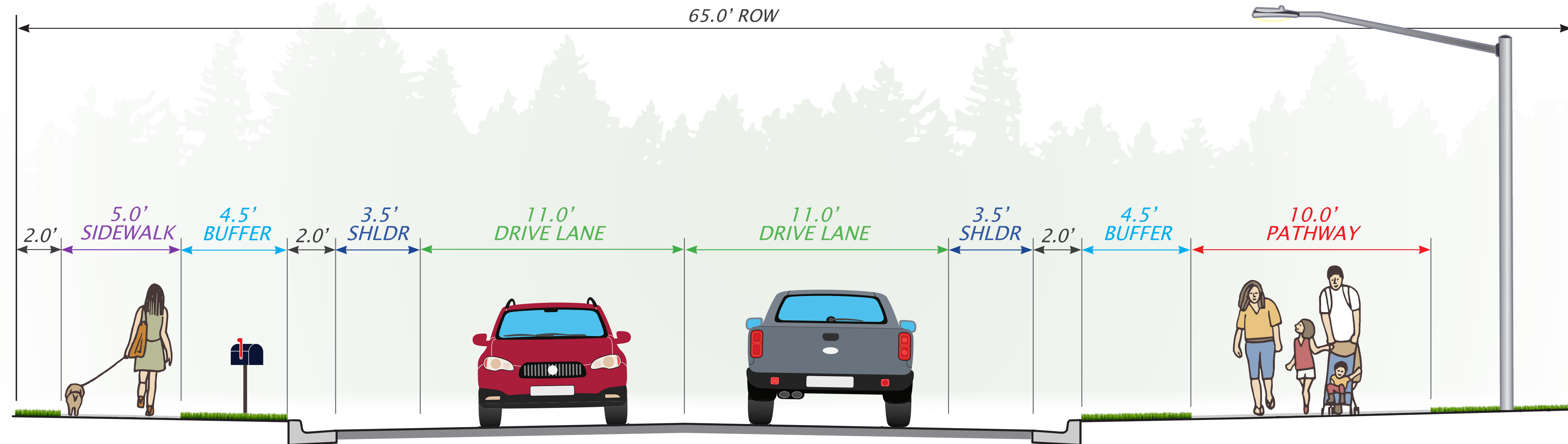
Municipality of Anchorage  
Project Management & Engineering Department

# LOIS DRIVE & 32<sup>ND</sup> AVENUE PATHWAY

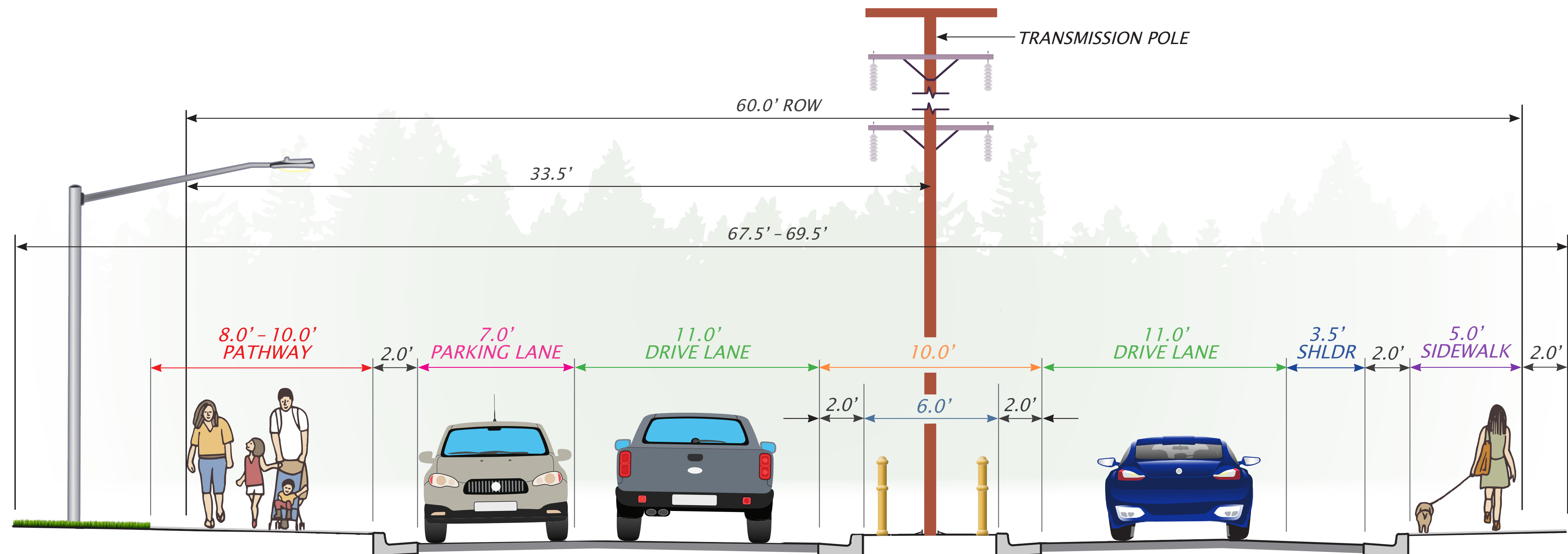
BENSON BOULEVARD TO MINNESOTA DRIVE

## ALTERNATIVE 2

**Lois Dr.**  
(Looking North)



**32<sup>nd</sup> Avenue**  
(Looking East)





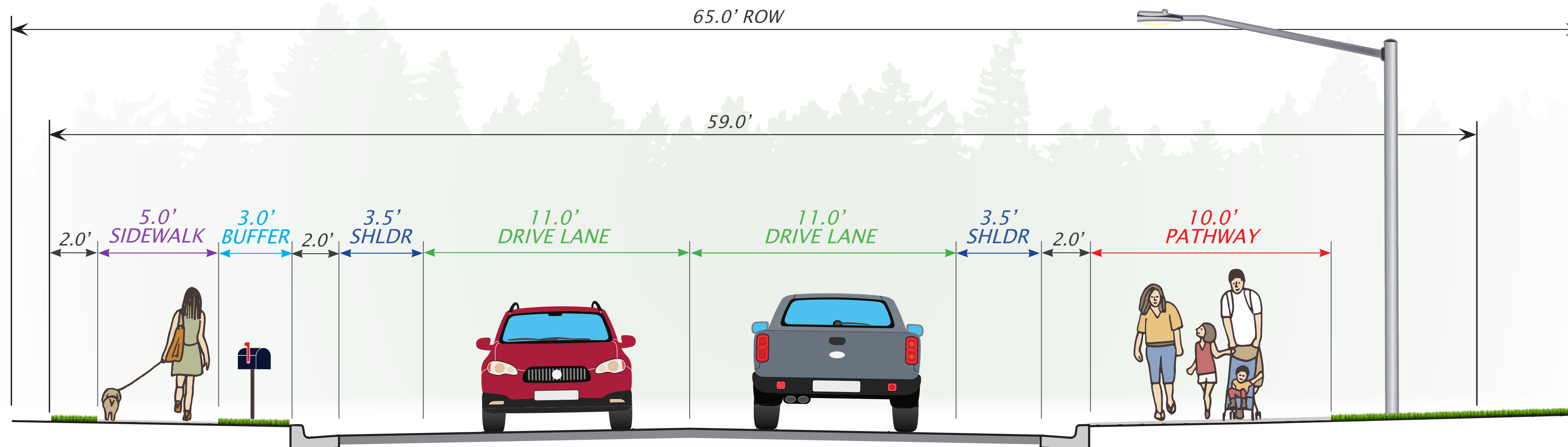
Municipality of Anchorage  
Project Management & Engineering Department

# LOIS DRIVE & 32<sup>ND</sup> AVENUE PATHWAY

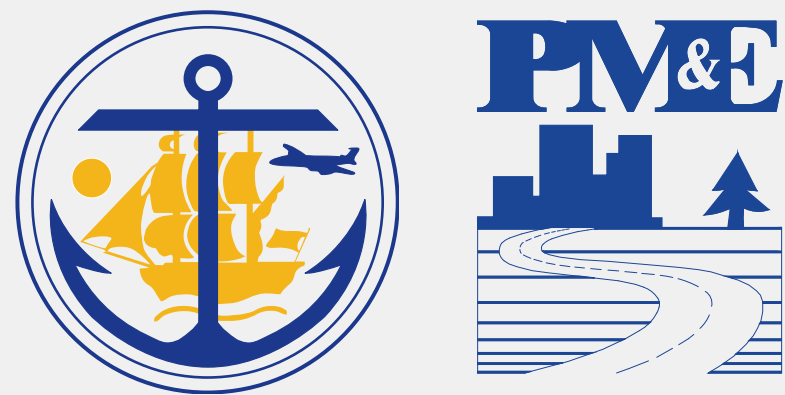
BENSON BOULEVARD TO MINNESOTA DRIVE

## ALTERNATIVE 3

**Lois Dr.**  
(Looking North)







Municipality of Anchorage  
Project Management & Engineering Department

# LOIS DRIVE & 32<sup>ND</sup> AVENUE PATHWAY

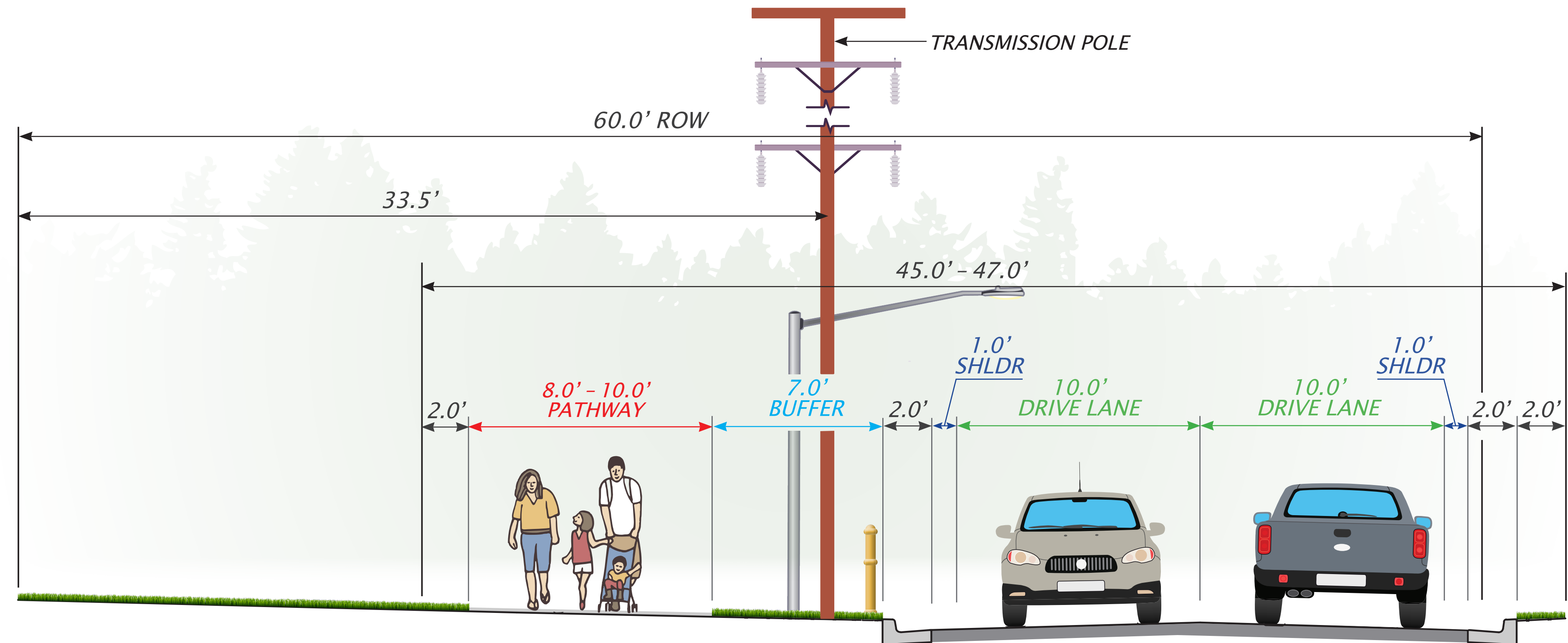
BENSON BOULEVARD TO MINNESOTA DRIVE

## ALTERNATIVE 3

### 32<sup>nd</sup> Avenue

#### Alternative 3A – West End (Looking East)

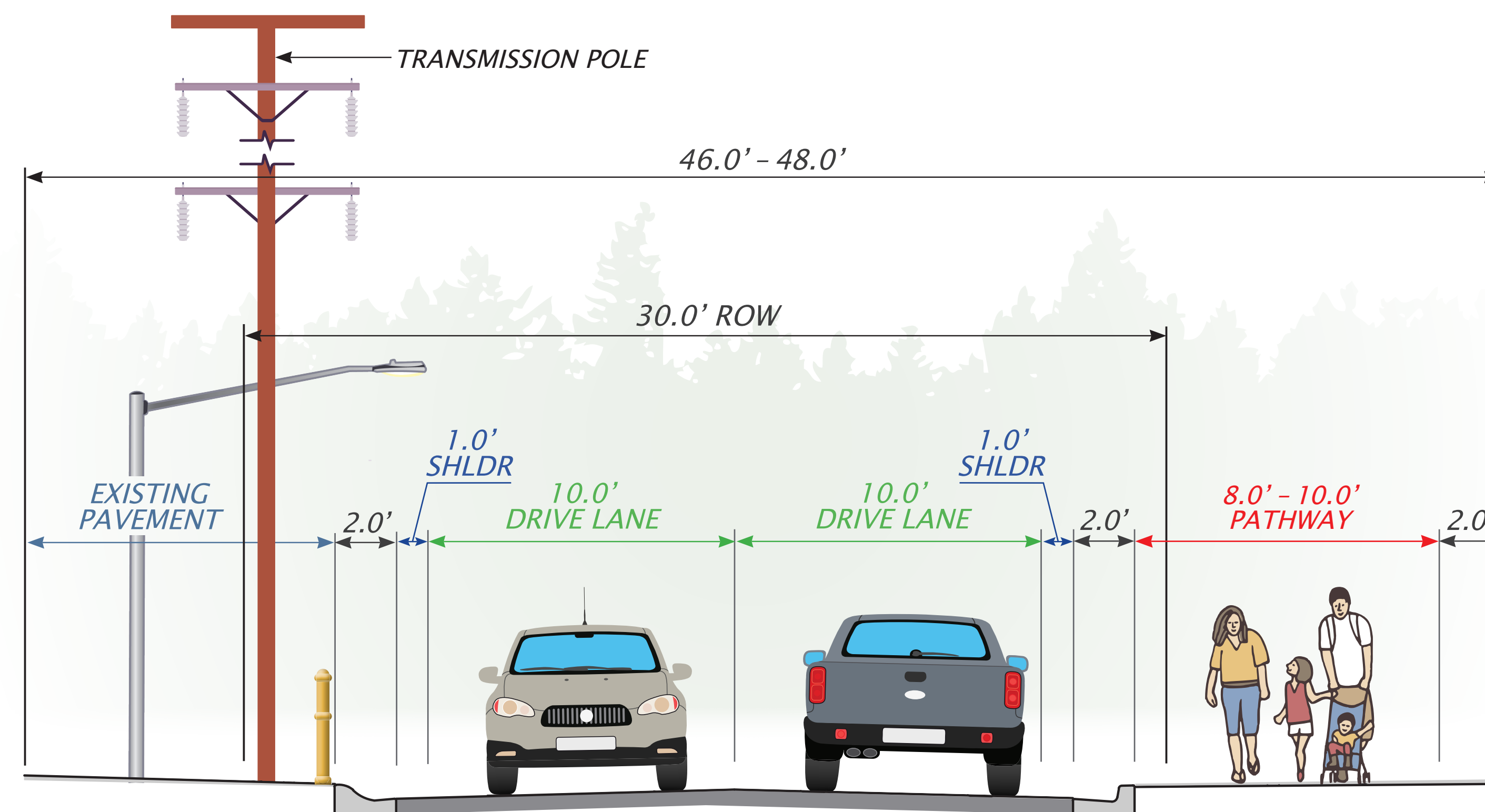
*Alternative 3A would be constructed  
along the west end of 32<sup>nd</sup> Avenue  
(along Aquarian Charter School)*



### 32<sup>nd</sup> Avenue

#### Alternative 3B – East End (Looking East)

*Alternative 3B would be constructed  
along the east end of 32<sup>nd</sup> Avenue  
(along Anchorage Sand Apartments)*





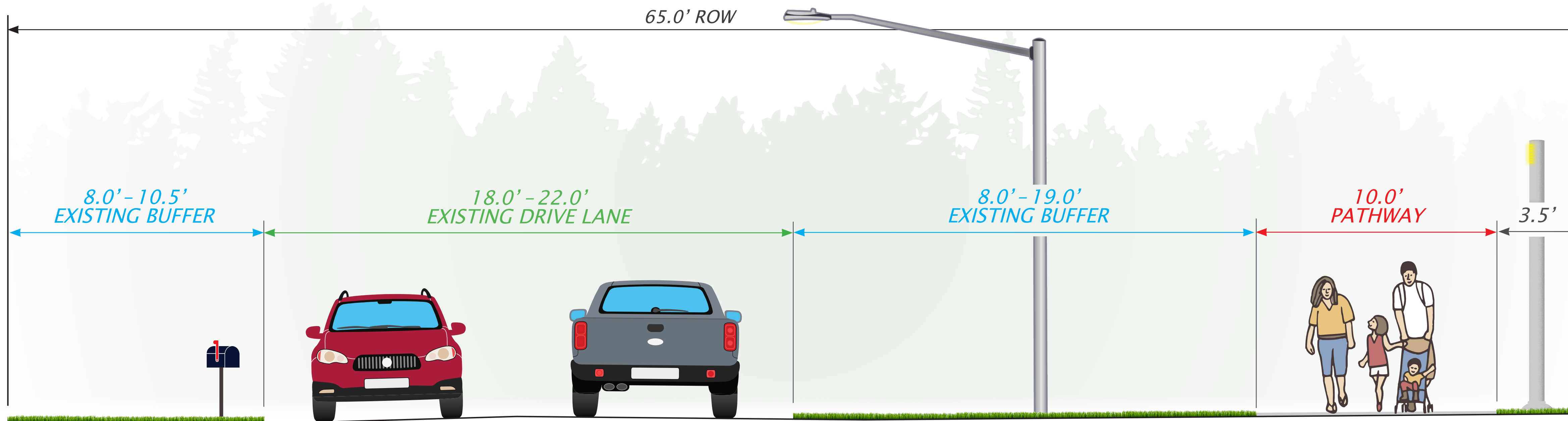
Municipality of Anchorage  
Project Management & Engineering Department

# LOIS DRIVE & 32<sup>ND</sup> AVENUE PATHWAY

BENSON BOULEVARD TO MINNESOTA DRIVE

## ALTERNATIVE 4

**Lois Dr.**  
(Looking North)



# LOIS DRIVE & 32<sup>ND</sup> AVENUE PATHWAY

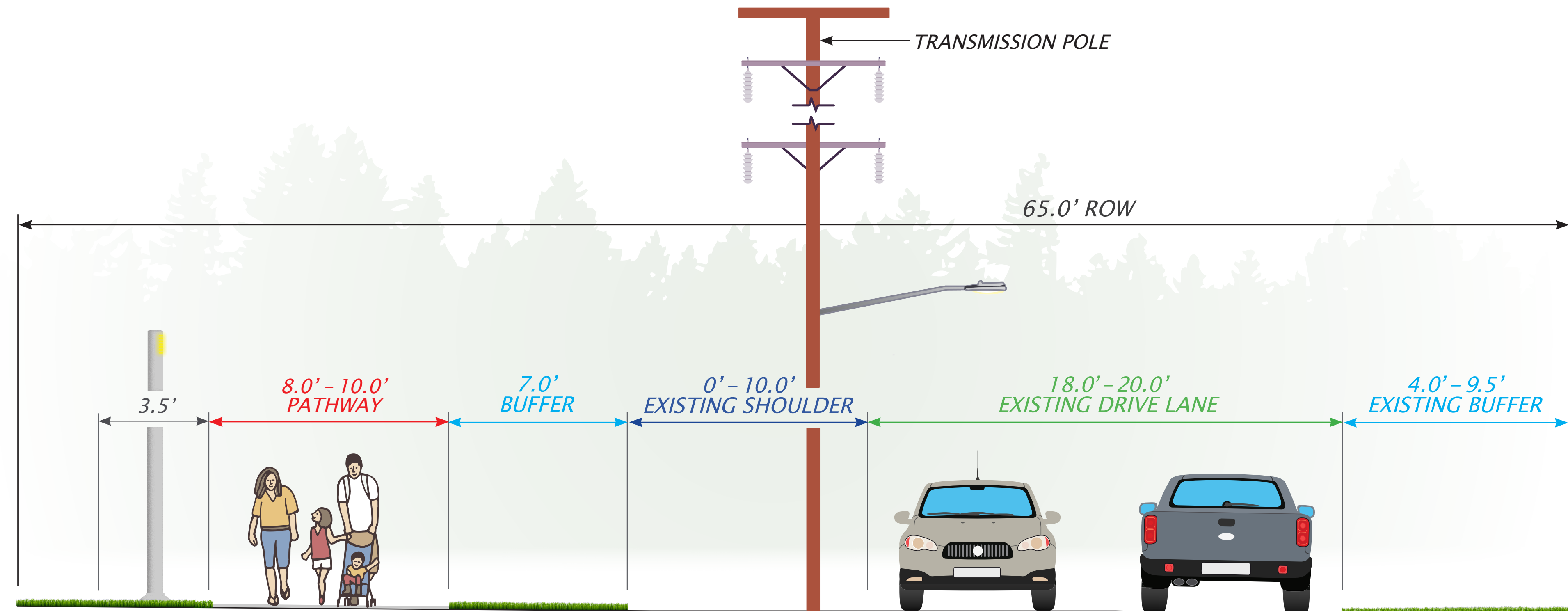
BENSON BOULEVARD TO MINNESOTA DRIVE

## ALTERNATIVE 4

### 32<sup>nd</sup> Avenue

#### Alternative 4A – West End (Looking East)

*Alternative 4A would be constructed  
along the west end of 32<sup>nd</sup> Avenue  
(along Aquarian Charter School)*



### 32<sup>nd</sup> Avenue

#### Alternative 4B – East End (Looking East)

*Alternative 4B would be constructed  
along the east end of 32<sup>nd</sup> Avenue  
(along Anchorage Sand Apartments)*

